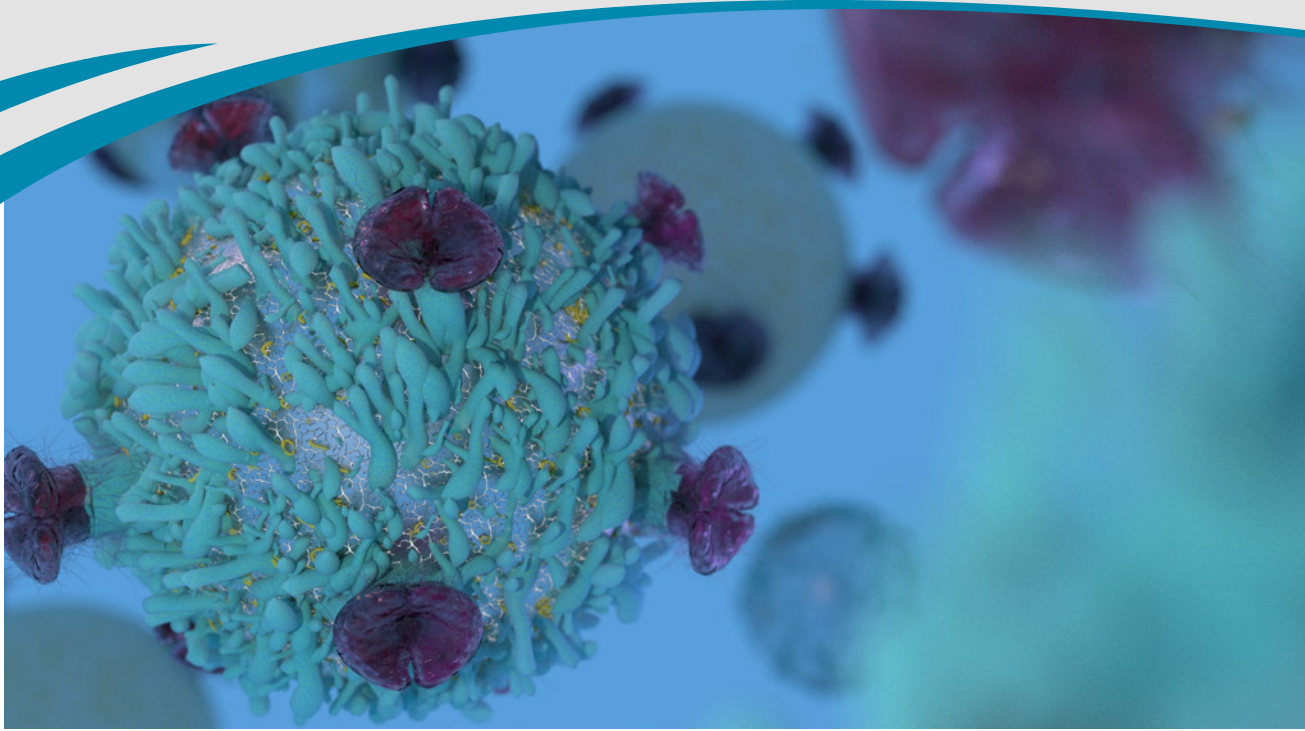


# INFLAMMATION CELL BY CELL



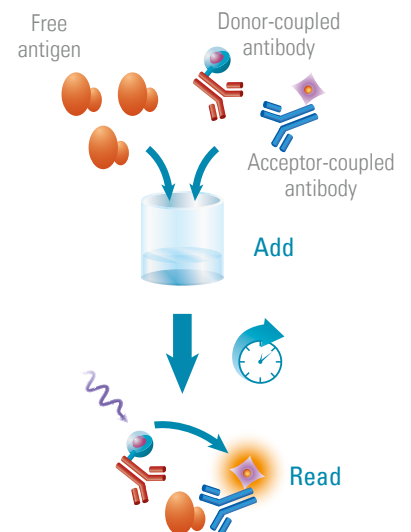
## HTRF® SOLUTIONS FOR EACH CELL TYPE

Inflammatory processes are complex and involve multiple cell subtypes that interact with each other. Each subtype (T cells, B cells, NK cells) expresses specific intra-cellular markers and secretes unique cytokine panels.

Cisbio cell-based assays offer a unique solution to monitor specific cellular activation by measuring cellular content and cytokine release.

### Cisbio Add-and-read assays

- Cell-based
- Low sample volume (16 µL)
- Intra-cellular phospho-proteins
- Intra-cellular transcription factors
- Released cytokines and biomarkers



HTRF Technology, a powerful, easy alternative to ELISA & Western Blot

- Easy add-and-read protocol saves you time with NO washing steps
- Low sample volume consumption helps save laboratory resources

## T CELLS

SUBTYPE	PRODUCT	SIZE	PART#
Cytotoxic CD8+	STAT1 phospho-Y701	500 tests	63ADK026PEG
	Granzyme B	500 tests	63ADK095PEG
	IFN $\gamma$	96 tests	62HIFNGPET
	TNF $\alpha$	96 tests	62HTNFAPET
T reg	STAT5 phospho-Y694	500 tests	64AT5PEG
	IL10	500 tests	62HIL10PEG
	TGF $\beta$ 1	500 tests	62HTGFBPEG
NKT	GM-CSF	500 tests	62HGMCSFPEG
	IFN $\gamma$	96 tests	62HIFNGPET
	TNF $\alpha$	96 tests	62HTNFAPET
TH1	STAT1 phospho-Y701	500 tests	63ADK026PEG
	IL2	96tests	62HIL02PET
	IL10	500 tests	62HIL10PEG
	IFN $\gamma$	96 tests	62HIFNGPET
	TNF $\alpha$	96 tests	62HTNFAPET
TH2	STAT5 phospho-Y694	500 tests	64AT5PEG
	IL4	500 tests	62HIL04PEG
	IL5	500 tests	62HIL05PEG
	IL10	500 tests	62HIL10PEG
	IL31	500 tests	62HIL31PEG
TH9	STAT3 phospho-Y705	96 tests	62AT3PET
	IL10	500 tests	62HIL10PEG
TH17	STAT3 phospho-Y705	96 tests	62AT3PET
	CCL20	500 tests	62HCC20PEG
	IL17	96 tests	62HIL17PET

## B CELLS

SUBTYPE	PRODUCT	SIZE	PART#
B-2 (Follicular)	IL2	96 tests	62HILPET
	IL4	500 tests	62HIL04PEG
	IL6	96 tests	62HIL06PET
	TNF $\alpha$	96 tests	62HTNFAPET
B reg	IL10	500 tests	62HIL10PEG
Be-1 (Effector 1)	IL12	500 tests	62HIL12PEG
	IFN $\gamma$	96 tests	62HIFNGPET
Be-2 (Effector 2)	IL2	96 tests	62HILPET
	IL4	500 tests	62HIL04PEG
MZ (Marginal zone)	IL6	96 tests	62HIL06PET
	CCL2 (MCP1)	500 tests	62HCCL2PEG
	CXCL10 (IP10)	500 tests	62HCX10PEG

## NK CELLS

PRODUCT	SIZE	PART#
AKT phospho-S473	96 tests	64AKSPET
ERK phospho-T202/Y204	96 tests	64AERPET
SLP76 phospho-S376	96 tests	63ADK076PET
Granzyme B	500 tests	63ADK095PEG
GM-CSF	500 tests	62HGMCSFPEG
IL10	500 tests	62HIL10PEG
IFN $\gamma$	96 tests	62HIFNGPET
TNF $\alpha$	96 tests	62HTNFAPET

Part numbers are for the smallest available assay format.  
Bulk sizes are available.

## EXPERT SERVICES TO SATISFY YOUR EXACT NEEDS



In addition to providing ready-to-use kits with all the necessary reagents, Cisbio's team of experienced experts works hand-in-hand with its clients to create custom solutions. When you have specific requirements for Inflammation investigations, Cisbio is the ideal trusted partner to develop the assays you need.

Keep your therapeutic research moving forward with faster, more robust, physiologically relevant results. Call us or visit [www.cisbio.com/Inflammation Immunology](http://www.cisbio.com/Inflammation Immunology)

### FOR MORE INFORMATION

Europe and other countries +33(0)466 796 705 U.S. and Canada 1-888-963-4567 China +86 21 5018 9880  
Japan +81-(0)43-306-8712 Visit [www.cisbio.com](http://www.cisbio.com) to find a list of our regional distributors

