

# Custom Solutions



## INNOVATIVE TECHNOLOGY, EXPERT SCIENTISTS, AND OUTSTANDING SERVICES

- CUSTOM ASSAY
- CUSTOM LABELING
- CUSTOM PROFILING AND SCREENING



# CUSTOM LABELING

With over 30 years of experience in custom labeling techniques, Cisbio will provide you a product that meets and exceeds your expectations. Thanks to our different labeling techniques and the large variety of linkers and dyes, we are able to label many kinds of material, always trying to find best options to fit your needs.

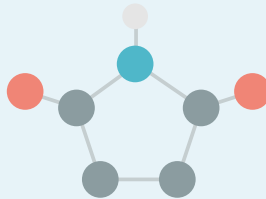
All you need to do is select your fluorophore and send us your material to be labeled. Our experts will handle your labeling and keep you posted at every step of the way. It's that simple!

## WE LABEL ANTIBODIES, PROTEINS, SMALL MOLECULES, NUCLEIC ACIDS...



### WORKABLE MATERIALS

- Small molecules
- Small proteins
- Large proteins
- Antibodies
- Nucleic acids



### LABELING TECHNIQUES

- N-hydroxysuccinimide (NHS) and Sulfo-NHS-primary amines
- Maleimide
- Click Chemistry



### DYES AND LINKERS / BIOTIN

- Fluorophores (Eu, Tb, XL665, d2, Fluorescein...)
- Biotin
- Linkers

## OUR STRAIGHTFORWARD CUSTOM LABELING PROCESS...

**1**   
Select your fluorophore

**2**   
Send us the material

**3**   
Track our progress

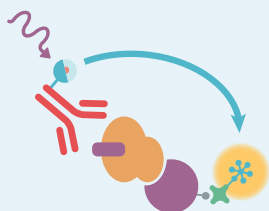
**4**   
Receive your labeled material

# ASSAY DEVELOPMENT

Cisbio has partnered with industry and academia professionals to dramatically shorten the drug identification process using our powerful, accurate HTRF® technology.

An experienced Project Manager will evaluate your project's chance of success, then work with you to create a customized assay for the target you seek to explore, working in strict confidentiality. We will make sure that the solution works for you by running it on your equipment in your lab.

**WITH 3 CUSTOM ASSAY OPTIONS, THERE IS AN APPROACH FOR ANY NEED...**



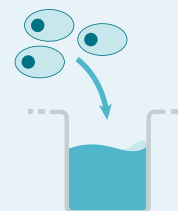
## BIOCHEMICAL ASSAY

We utilize only purified reagents for enzyme assays, protein quantification, or protein-protein interaction assays to elucidate your target's biology.



## ELISA CONVERSION

We can convert any of your ELISA assays into an efficient HTRF® format, thus eliminating time-consuming and expensive steps.




## CELL-BASED ASSAYS

This customized solution will work with your specific cells. The reagents are carefully selected and optimized on your lysates to ensure consistent, reliable, and high-quality results on your preferred cell model.

**OUR STRAIGHTFORWARD ASSAY DEVELOPMENT PROCESS...**

**1**  Project Manager

**2**  Feasibility Study

**3**  Project Timeline

**4**  Assay Development

**5**  Final Report

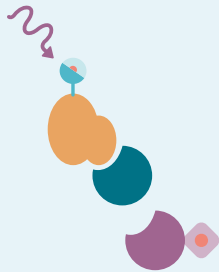
**6**  Assay Transfer

**7**  Custom Assay

# COMPOUND PROFILING

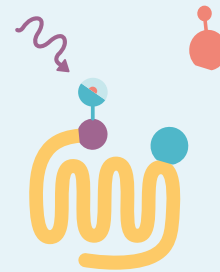
The opportunity to outsource the profiling of compounds is within reach for any research organization thanks to Cisbio and our award winning HTRF technology. HTRF gives you access to a wide range of acclaimed assays & services for all your profiling needs.

## OUR PROFILING SERVICES INCLUDE...



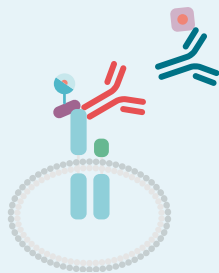
### PROTEIN-PROTEIN INTERACTIONS

Choose the versatility of HTRF assays for your PPI research.



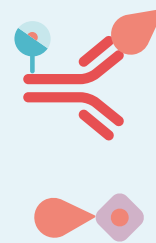
### GPCR BINDING ASSAYS

Competition assays are run with any unlabeled ligands to determine binding efficiency and constants.



### RECEPTORS THAT RECOGNIZE THE FC PORTION OF IgG

Choose the variants to be tested and provide the samples.




### PHOSPHODIESTERASE ASSAYS

Have access to a robust Phosphodiesterase (PDE) assay using HTRF cAMP and cGMP kits.

## OUR STRAIGHTFORWARD COMPOUND PROFILING PROCESS...

1  Select your assays

2  Send us your compounds

3  Track our progress

4  Review Analysis with our Experts

## WHY CHOOSE CISBIO?

### UNRIVALED HTRF EXPERTISE

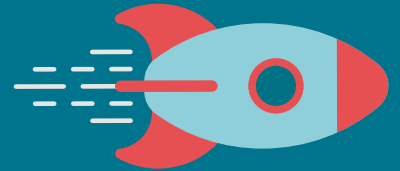


Our expertise doesn't end with our extensive catalogue of over 600 kits and reagents. With Cisbio's custom solutions, you benefit from a team of experts who can help create the tools you need. Whatever your project needs, we have the people, experience, and resources to provide the ideal customized, scalable, efficient solution for your research.

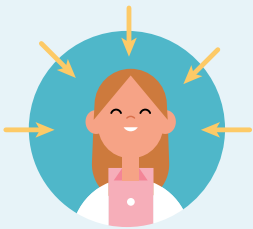
### TURNAROUND SPEEDS YOU CAN RELY ON WITH RESULTS YOU CAN TRUST

Scientific discoveries cannot wait. Why should you?

Our kits and reagents are always in stock, and our scientific teams pride themselves on their efficiency and flexibility.



### CUSTOMER-CENTRIC APPROACH



Meeting you and your needs locally is part of our strategy, that's why, Cisbio is organized around regional laboratories. We guarantee direct access to your assigned dedicated Project Manager who will take care of your project. We do not use automated phone systems or complex directory. Simply talk to the right person, right away.

Our attention to customer service is reflected in our motto, ***"Interaction is everything"***.

### REALISTIC CHANCES OF SUCCESS

With our expertise and dedication, we can claim success rates above 90%.

Our policy is to always be honest on the chances of success for your project, that's why we will first deliver to you a feasibility study that gives a realistic assessment of the chances of success.

We bet on rational explanations to build trust with our clients.



For more information or to discuss your specific labeling or custom diabetes assay requirements, please contact your local Cisbio representative or visit [www.cisbio.com](http://www.cisbio.com)



### Cisbio bioassay Europe Sales and Headquarters

*Parc Marcel Boiteux  
BP 84175  
30200 Codolet, France  
Phone: +33 (0)4 66 79 67 05  
Fax: +33 (0)4 66 79 19 20  
[bioassays@cisbio.com](mailto:bioassays@cisbio.com)*

### Cisbio bioassay United States

*135 South Road  
Bedford, MA 01730, USA  
Phone: +1 888 963 4567  
Fax: +1 781 687 1500  
[htrfinfo@cisbio.us](mailto:htrfinfo@cisbio.us)*

### Cisbio bioassay Japan

*1-3 Nakase Mihama-ku Chiba-shi,  
Chiba Japan 261-8501  
Makuhari Techno Garden, 11F Building D  
Phone: +81-(0)43-306-8712  
Fax: +81-(0)43-306-8713  
[htrf@cisbio.jp](mailto:htrf@cisbio.jp)*

### Cisbio bioassay China

*Suite 401, Building 2  
1299 Zhangheng Road  
Zhangjiang Hi-Tech Park  
Pudong, Shanghai 201203, China  
Phone: +86-21-5018-9880  
Fax: +86-21-5020-3055  
[htrfinfoasia@cisbio.cn](mailto:htrfinfoasia@cisbio.cn)*